



Royal Berkshire
NHS Foundation Trust

Building Berkshire Together

WEST BERKSHIRE COUNCIL
HEALTH AND WELLBEING BOARD

ALISON FOSTER, PROGRAMME DIRECTOR
5 DECEMBER 2024



OUR NEW HOSPITAL PROGRAMME



@building_berkshire_together



@buildingberkshiretogether



@BuildingRBH

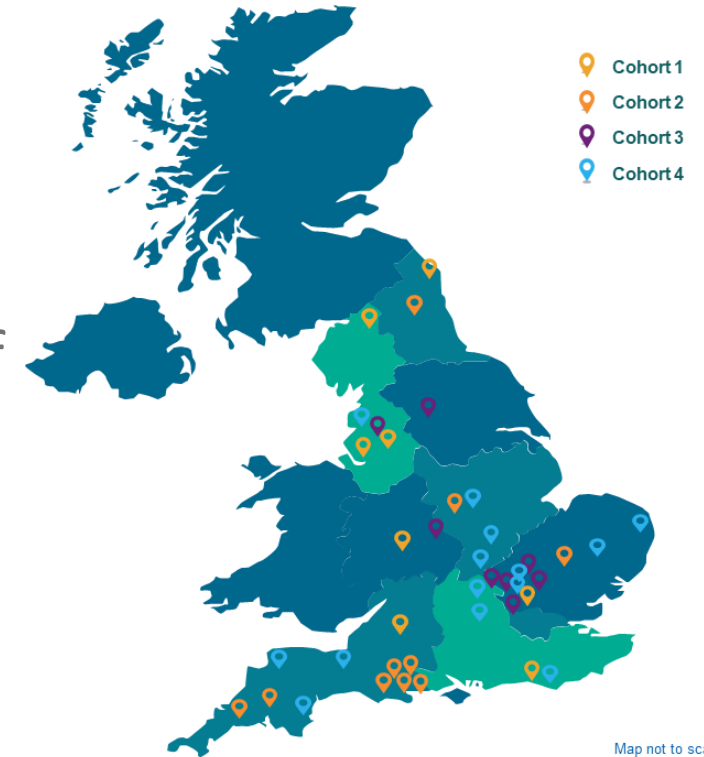
Agenda

- New Hospital Programme & Background
- Programme update (programme plan slide)
- Location-led Impact Assessment
- Next Steps
 - Options Development
 - Clinical Model
 - Environmental
 - Travel and Transport Assessment



New Hospital Programme

- Major Government programme investing in hospitals across England
- Centralised programme which will use a common set of designs to save money and time – this is called Hospital 2.0
- Construction for Royal Berkshire is currently scheduled to begin in 2031
- NHP Review – expected outcome in the new year



OUR NEW HOSPITAL PROGRAMME



@building_berkshire_together



@buildingberkshiretogether



@BuildingRBH

Options for Royal Berkshire Hospital

A once in a generation opportunity
Strong case for change

Our current site is challenging to build on;

- Landlocked site and limited space to expand
- Hospital 2.0 requirements
- Geology of the site

Focus on a whole new hospital on a new site



@building_berkshire_together



@buildingberkshiretogether



@BuildingRBH

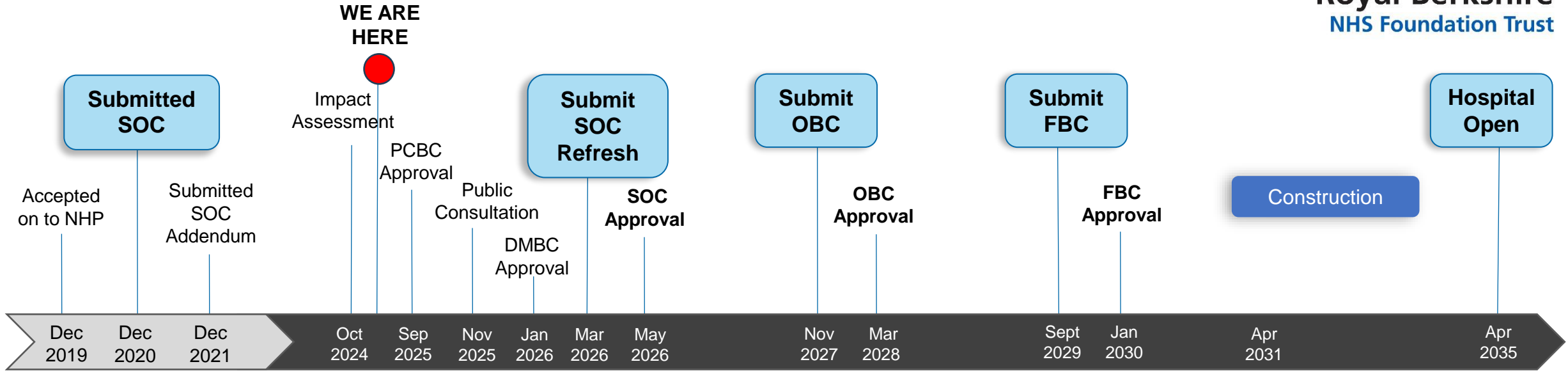


OUR NEW HOSPITAL PROGRAMME

Building Berkshire Together Road Map



Royal Berkshire
NHS Foundation Trust



Target Dates

Options Appraisal

Feasibility Study

Construction

Handover

Assumption is funding confirmed in February 2025

PCBC – Pre-Consultation Business Case, DMBC – Decision Making Business Case, SOC – Strategic Outline Case, OBC – Outline Business Case, FBC – Full Business Case



@building_berkshire_together



@buildingberkshiretogether



@BuildingRBH



OUR NEW HOSPITAL PROGRAMME

Current position

- Outcome of NHP review in January 2025
- Location-led Integrated Impact Assessment
- Pre-Consultation Business Case (PCBC)
 - Options Development
 - Clinical Model
 - Environmental and Sustainability
 - Travel and Transport Infrastructure
- Land acquisition
 - Site selection
 - Securing options for consultation



@building_berkshire_together



@buildingberkshiretogether



@BuildingRBH



OUR NEW HOSPITAL PROGRAMME



Royal Berkshire
NHS Foundation Trust

Location-Led Integrated Impact Assessment



@building_berkshire_together



@buildingberkshiretogether



@BuildingRBH



OUR NEW HOSPITAL PROGRAMME

Integrated Impact Assessment (IIA) Background

- Ran between May 2024 – September 2024
- Two sites met the site criteria – Thames Valley Park & Thames Valley Science Park
- Quantitative / Qualitative – over 10,000 individuals contributed through;
 - Staff workshops
 - One to one briefings with Healthwatch & Council officers
 - Community Leader workshops
 - Public survey
- Iterative



OUR NEW HOSPITAL PROGRAMME



@building_berkshire_together



@buildingberkshiretogether

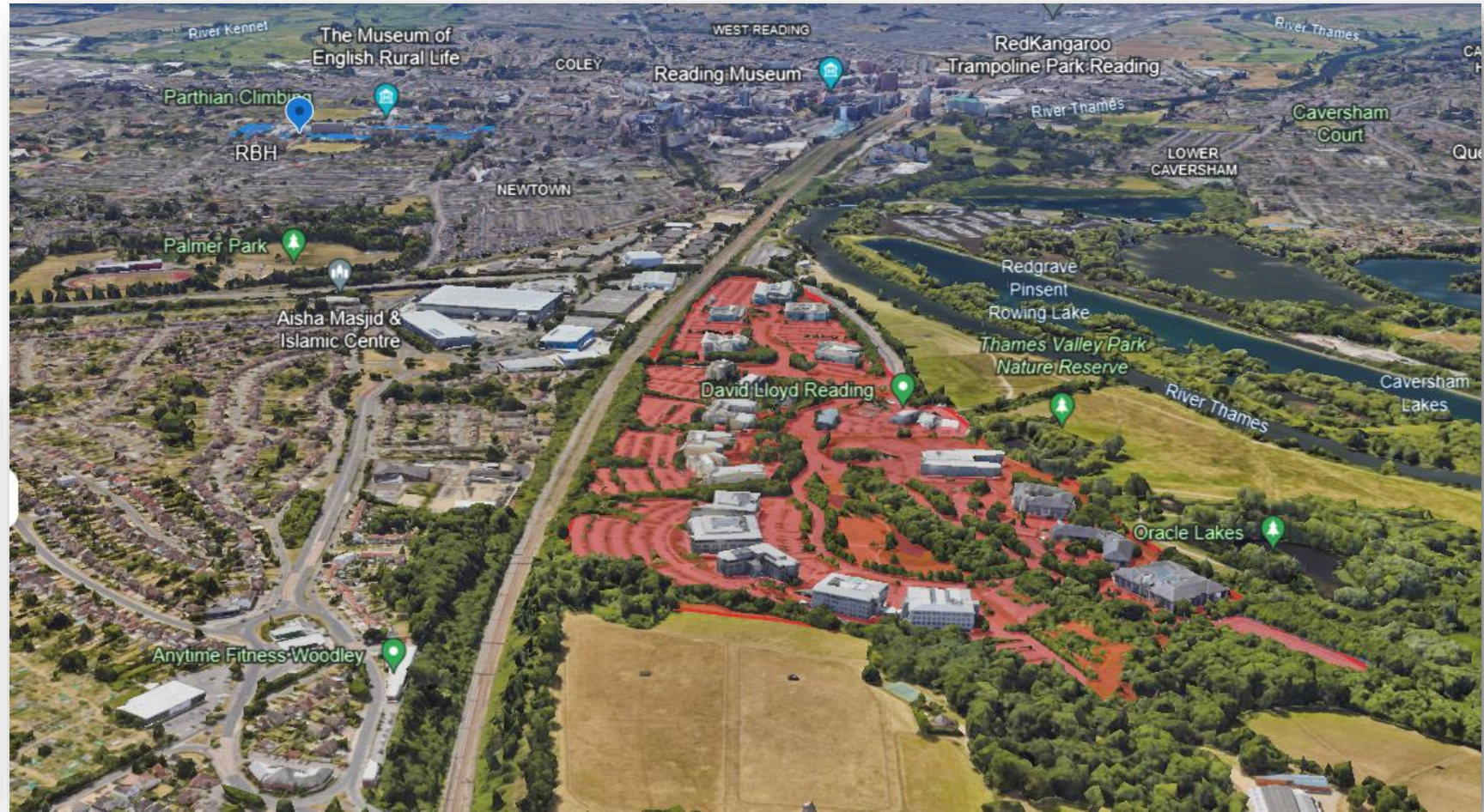
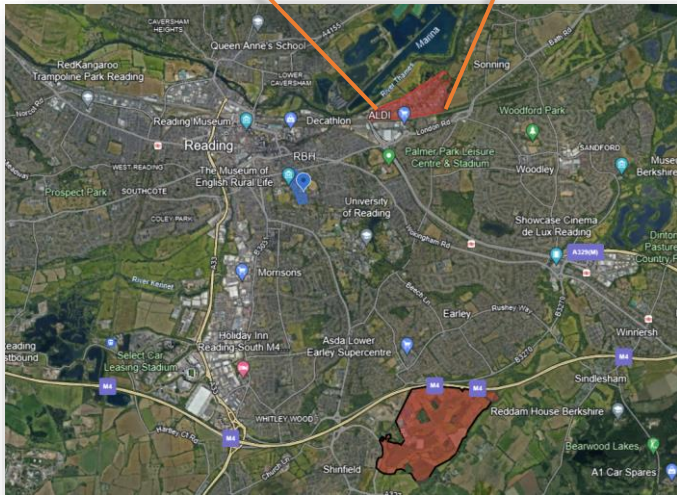


@BuildingRBH

Thames Valley Park



Royal Berkshire
NHS Foundation Trust



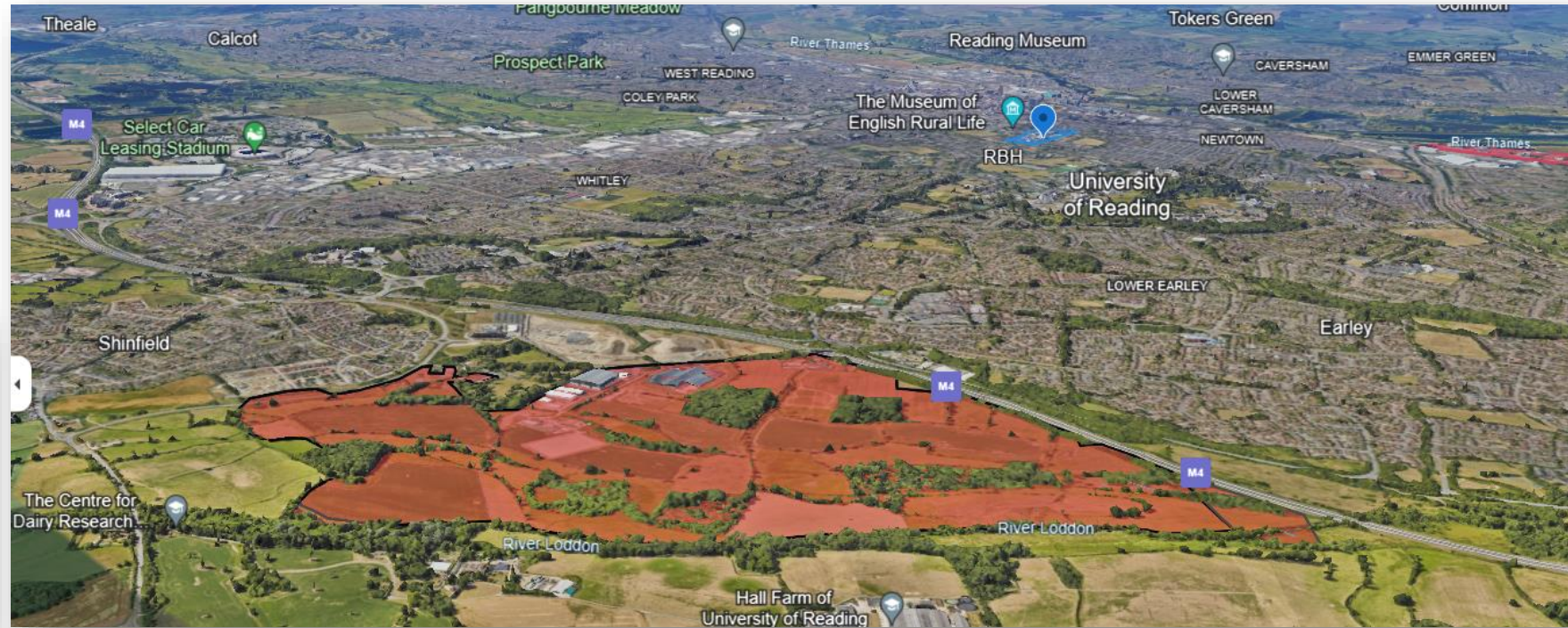
2.2 miles from current site

Note that the sites are approximate areas and do not show exact site boundaries proposed for the new hospital. Distances are based on driving route from RBH main entrance

Thames Valley Science Park



Royal Berkshire
NHS Foundation Trust



Note that the sites are approximate areas and do not show exact site boundaries proposed for the new hospital. Distances are based on driving route from RBH main entrance

3.7 miles from current site

Key Chapter Takeaways



Royal Berkshire
NHS Foundation Trust

Chapter

Key Message

Health Services Impact Assessment

Relocating to TVP or TVSP provides **infrastructure upgrades** and **access to modern facilities**, aligning with NHP Hospital 2.0 goals. Any move will **reduce clinical risks associated with the hospital infrastructure**, though the full impact on health services will depend on the development and assessment of the clinical model.

Traffic & Transport Impact Assessment

Relocating to TVP or TVSP **increases travel times for patients using public transport, walking, or cycling**, with TVP performing better than TVSP. While **TVP sees 62% of patients within a 60-minute public transport ride, TVSP only has 35%**, and both sites have fewer patients within walking or cycling distance compared to the current location.

Local Health Economy Impact Assessment

Relocating to TVP or TVSP **aligns with the ICB strategy and local health plans**, aiming to improve patient care and outcomes. The **gravitational analysis predicts a 4.9% increase in patient numbers for RBFT at TVP, but only a slight 0.1% rise at TVSP** due to its more rural location.

Health Inequalities Impact Assessment

Relocating to either site **could increase travel times for all 13 protected and underserved groups**, potentially limiting access. **Impact on inequalities will be clearer once the care model is assessed**, with significant variations in accessibility, such as a 10% reduction for low-income individuals at TVP and 73% fewer over-65s at TVSP, alongside concerns about transport, parking, and access for groups like refugees.

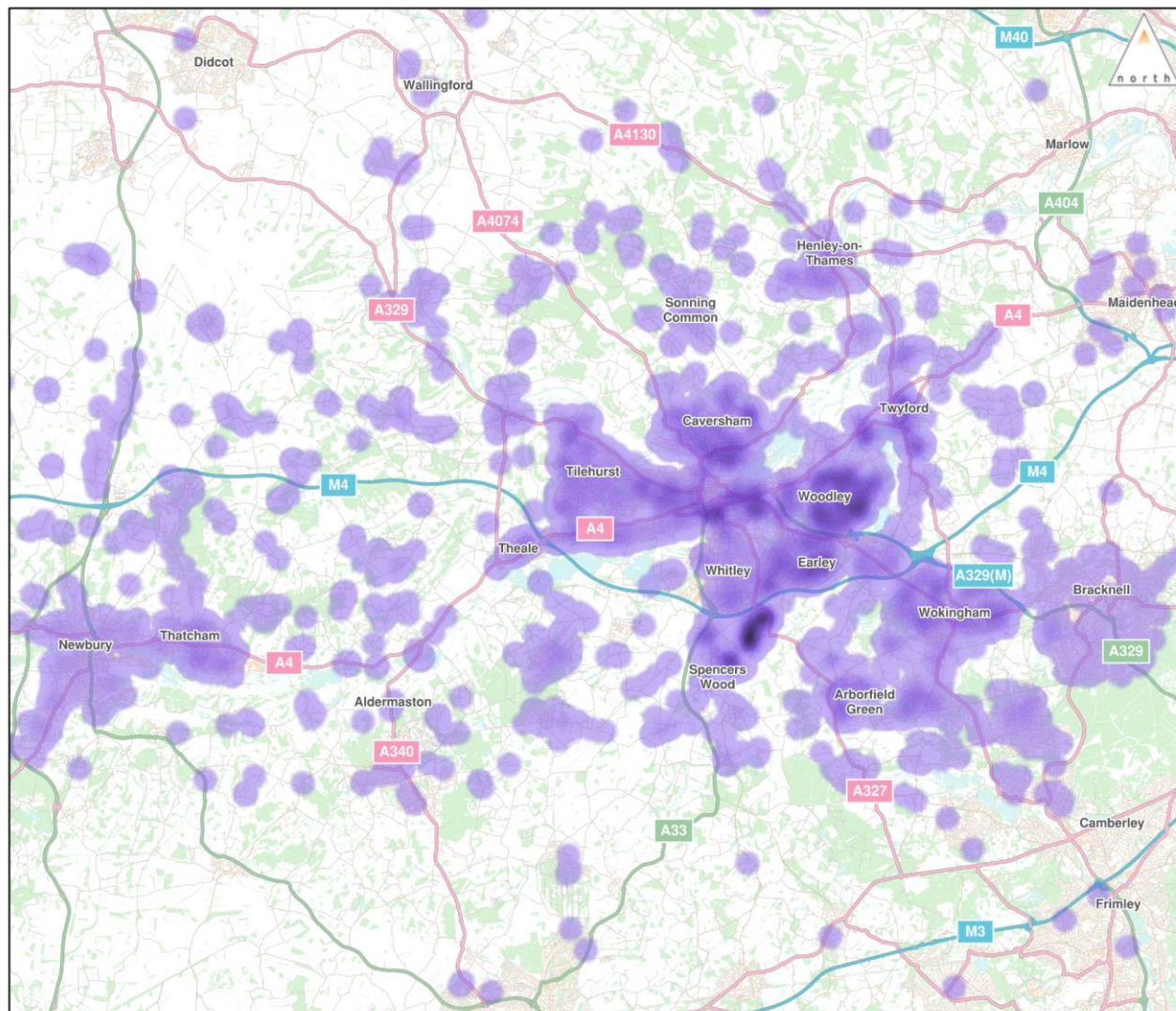
Community Impact Assessment

Our **qualitative assessment suggests both TVP and TVSP align with regional and local council policies**, with **potential biodiversity and environmental risks that can be mitigated**. Local residents and businesses near the sites were generally positive or neutral about the relocation, and the impact on the RBFT supply chain is considered neutral.

Economic Impact Assessment

So far the location-led Economic Impact Assessment shows **TVSP offers the highest economic benefits** at £819m, £57m more than TVP's £762m, driven by a higher land value uplift and cost savings. Both sites generate £26m from construction jobs, with TVSP slightly ahead in environmental benefits (£55m vs £53m for TVP).

West Berkshire Survey Respondents



- 9642 respondents to the public survey
- 8873 gave their postcode
- 2110 West Berkshire postcodes = 24%

West Berkshire Feedback

- Residents in West Berkshire were **positive of a move to both new sites** due to their proximity to the M4/A329(M) with the emphasis on **improvements required** to bus services and having a suitable place to wait (e.g. a bus depot).
- Thatcham representatives emphasized **the need for choice with regards to transport** and ensuring adequate car access, parking and public transport links.
- There was also a point raised to bridge current and future need and consider developing a site that will reduce reliance on cars.
- West Berkshire residents saw **satellite hubs** as a positive for ease of access and reduced parking costs compared to RBH. Some commented on making better use of satellite sites, with an example of moving diagnostics out of the main RBH site to reduce footfall.
- Concerns about **access from villages** was raised.



OUR NEW HOSPITAL PROGRAMME



@building_berkshire_together



@buildingberkshiretogether



@BuildingRBH

Next steps

- Await the outcome of the New Hospital Review – expected in the new year
- Follow the process to lead us to a formal public consultation
- Options Development
 - Clinical Model
 - Travel and Transport Analysis &
 - Environmental/Sustainability
 - Pre-Consultation Business Case
- In parallel with this work we are working out which services we need in the future to determine the right size of hospital
- Engagement opportunities - workshops and focus groups to be part of options development



@building_berkshire_together



@buildingberkshiretogether



@BuildingRBH



OUR NEW HOSPITAL PROGRAMME